

Institutional
investors



SUCCESS
THE **KINKO**
OPTICAL

OF

今國光學工業股份有限公司
Kinko Optical CO.,Ltd / Stock number: 6209

12th Nov. 2021

CONTENT

Innovate the way we live. Make the life better.

01

Disclaimer

02

Company Profile

03

Strength of Kinko

04

Product Development

05

Product Ratio

06

Core Value

07

Financial Report

08

Kinko's Vision

DISCLAIMER

Innovate the way we live. Make the life better.

➤The information contained in this presentation, including all forward-looking information, it subjects to change without notice, whether as a result of new updates, further events or otherwise, and Kinko Optical Co., Ld undertakes no obligation to publicly update or revise the information contained in this presentation

➤Investors should not regard the above forward-looking information as legally binding but as information subject to change. No guarantees regarding the completeness, accuracy, and reliability of information contained are made explicitly or implicitly. They are not intended to represent complete statement of the Company, industry or future development.

K I N K O
O P T I C A L

Disclaimer

Company Profile

Innovate the way we live. Make the life better.



Kinko Optical
H. Q.



Kinko Optical
R&D Center



Kinko Optical
Taichung Harbor Branch



Foshan Huaguo
KuangDong China

Kinko Optical Co., Ltd

Established:	19 th June 1980
Founder/C.E.O.	Mr. Chen, Ching-Chi (Kent)
GM:	Mr. Chou, Liang-Chang
Registered capital:	Approx: NTD 1.74 trillion
Main business units:	Glass Lens / Molding Glass Lens / Lens units /Optical Lens design & manufacture
Numbers of Employee:	2,445 people
H.Q.:	Kinko Optical (Taichung Taiwan)
Factories:	Kinko Optical (Taichung Taiwan) Foshan HuaGuo (GuangDong China)
Offices:	R&D Center (Taichung Taiwan)

Strength of Kinko

KINKO



K I N K O
O P T I C A L

- Nearly 40 years experience with glass polished lens, 18 years with molding glass and 15 years with lens units.
- Professional and experienced R&D members could perform outstanding techniques.
- Cooperate with top-notch companies in different industries.
- Sophisticated business culture --- Kinko's Core value "faith, integrity and selflessness".

Product Development

Innovate the way we live. Make the life better.

■ IOT lens



- Doorbell
- Indoor/ Outdoor
- Facial Recognition

■ Projector lens



- 4K projector
- Gaming projector

■ Automotive lens



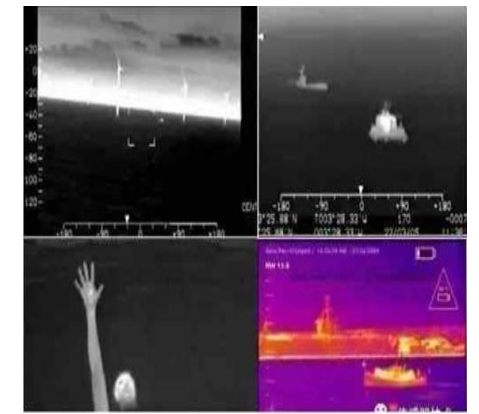
- Rear View
- ADAS
- Surround View
- Infrared Thermal Imaging

■ Gaming lens



- Gaming
- AR/ VR, wide angle lens

■ Infrared Thermal Imaging



- Security
- Automotive
- Medical
- Industrial

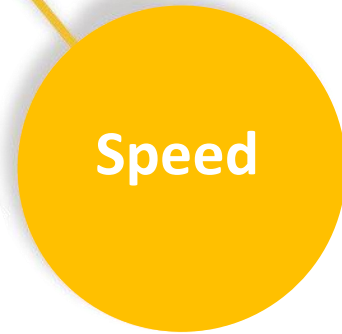
Product Ratio

Innovate the way we live. Make the life better.

	2020	2021(Jan~Sep)
IOT Lens	33.6%	30.5%
DSLR (Single Lens)	26.8%	32.0%
Infrared Thermal Imaging Lens	10.4%	10.1%
Automotive Lens	8.1%	13.0%
Mobile/ Gaming Lens	4.6%	2.0%
Industrial Lens	4.6%	3.1%
Projector Lens	4.1%	2.8%
Medical Lens	1.8%	1.0%
Telescope	1.8%	1.3%
Inspection Lens	0.9%	1.7%
Others	3.3%	2.5%

Core Value

Innovate the way we live. Make the life better.



Financial Report

Management Performance --- Annual Comparison

CONSOLIDATED STATEMENTS OF COMPREHENSIVE INCOME

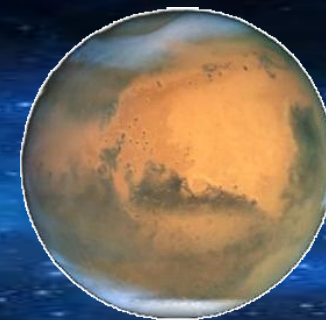
(In Thousands of New Taiwan Dollars, Except Earnings Per Share)

	Nine Months Ended September 30				
	2021		2020		Variance %
	Amount	%	Amount	%	
NET REVENUE	2,569,219	100.0%	2,072,807	100.0%	-18.6%
COST OF REVENUE	2,463,753	95.9%	1,994,732	96.2%	-17.9%
GROSS PROFIT	105,466	4.1%	78,075	3.8%	-33.4%
OPERATING EXPENSES	324,336	12.6%	270,399	13.0%	-10.8%
Marketing	34,535	1.3%	22,360	1.1%	-13.5%
General and administrative	187,609	7.3%	155,774	7.5%	-13.4%
Research and development	102,192	4.0%	92,265	4.5%	-5.4%
Other income and expenses	0	0.0%	29,606	1.4%	-
PROFIT/(LOSS) FROM OPERATIONS	(218,870)	-8.5%	(162,718)	-7.9%	-12.5%
Total non-operating income and expenses	6,594	0.3%	36,977	1.8%	-32.9%
LOSS BEFORE INCOME TAX	(212,276)	-8.3%	(125,741)	-6.1%	-3.9%
INCOME TAX BENEFIT(EXPENSE)	43,473	1.7%	(13,113)	-0.6%	-209.6%
NET INCOME (LOSS)	(168,803)	-6.6%	(138,854)	-6.7%	16.8%
NET INCOME ATTRIBUTABLE TO Shareholders of The PARENT	(168,803)	-6.6%	(138,854)	-6.7%	19.8%
EPS	(1.03)		(0.85)		

KINKO's VISION

Innovate the way we live. Make the life better.

- Become top-notch supplier for Hybrid lens (Glass + Plastic)
- Become one of the main supplier in IOT industry globally
- Become one of the main supplier in automotive industry globally
- Dedicated to a niche market of infrared thermal imaging lens leads the industry



KINKO

Thank you for your attention!